

Go2It 3.0™

SDR designed our popular dispatch mapping product and this modern update using feedback from 911 dispatchers and public safety personnel. The powerful yet easy-to-use Go2It solution supports your dispatch operations while offering your agency an affordable solution and prompt and reliable in-house support. SDR offers interfaces to ALI, RapidSOS, CAD, and AVL and will be happy to develop an interface for your local solution.

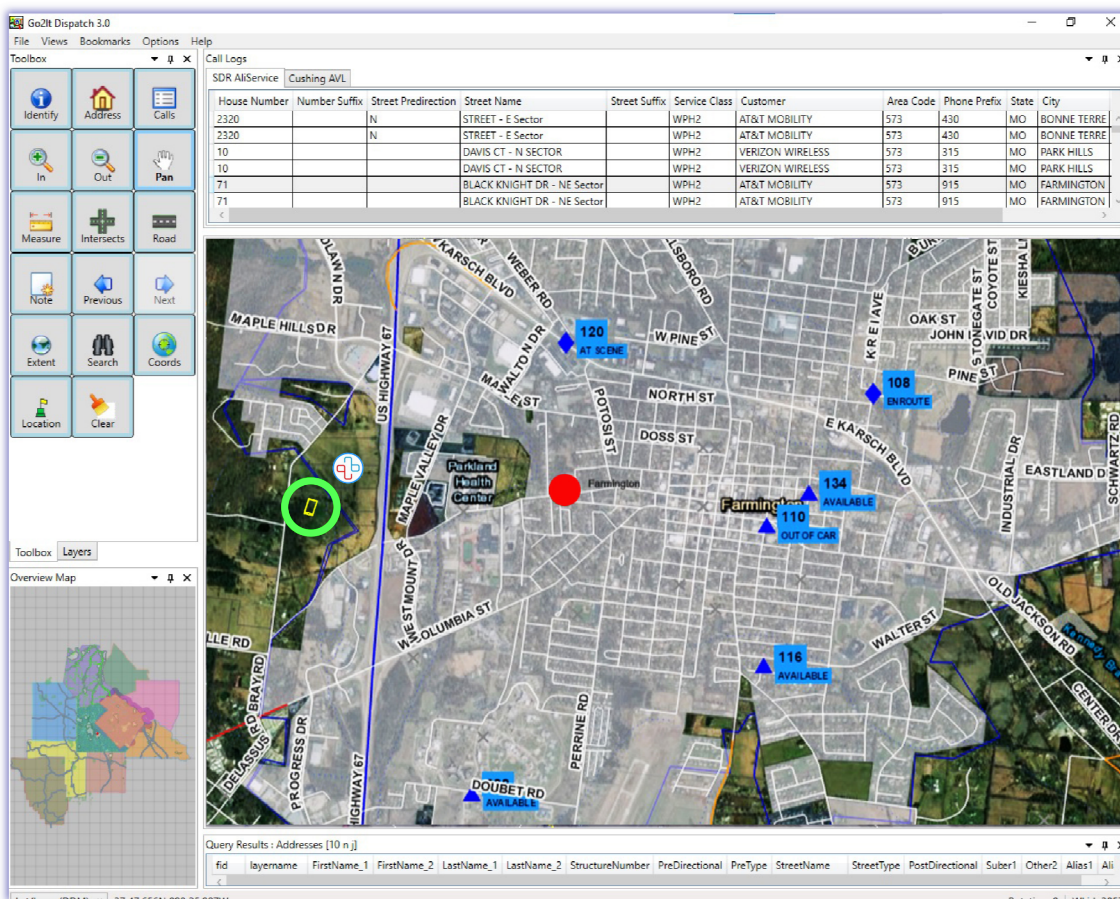


Go2It Features

- RapidSOS Ready
- 9-1-1 call logging
- Address, coordinate & intersection queries
- Name, place, fire hydrant and key location searches
- Mouse wheel zoom in and out
- Real-time coordinate read-out
- Linear and area measurement
- Interfaces to ALI, RapidSOS, CAD & AVL
- Online imagery basemap service
- Clean, professional appearance with fast redraw and query results
- Custom-built search engine ranks search results by match confidence
- Uses GIS data in any projection or 9-1-1 compliant format
- Supports multiple addressing layers with different data models
- Customizable layout with windows that can be docked and resized
- Map-tip pop-ups for response agencies and feature details
- User-based map notes for gate combos, road closures, hazardous conditions and more
- Customizable map bookmarks to quickly call up key areas
- Versatile symbology, labeling and layer visibility controls
- Media links for photos, floorplans, site maps and URLs

9-1-1 Dispatch Mapping and Location Query: Go2It 3.0 is SDR's next generation suite of powerful 911 dispatch mapping tools designed to quickly plot incoming 9-1-1 calls and provide map-based recommendations for responding agencies. Designed with popular ESRI graphics and versatile and powerful database engines, and interfaced with 9-1-1, RapidSOS, CAD, and/or AVL, Go2It 3.0 brings geospatial strength to your comprehensive 9-1-1 solution.

Fast and Comprehensive Location Mapping: A modern 9-1-1 center must know the location of a caller as quickly as possible, and that location may be an address, intersection, common place, or latitude/longitude coordinate delivered via the 9-1-1 system or add-on location service. Go2It offers reliable interfaced CAD/ALI/RapidSOS as well as easy key-in searches for all location types, including name searches for property owners. Phase II confidence and uncertainty factors are displayed with a color/circle diameter system for added location intelligence.



SDR - We Build Solutions

v060523

SDR PO Box 684 Olathe KS 66051 800-238-1911 www.sdrmaps.com



Data Clients: ALI, CAD & AVL

Go2It is easily interfaced to a variety of 911 controllers and computer-aided dispatch (CAD) and AVL outputs for immediate 9-1-1 call or incident-based mapping and vehicle location. Call location map symbols indicate what type of call was received – landline or Phase I or II wireless. All calls are written to a call log so that any dispatcher can click to map any call, but the map location will automatically update on the station of the dispatcher who answered the call. Administrator controls allow the supervisor or director to monitor all call activity and auto-plot any incoming 911 calls.

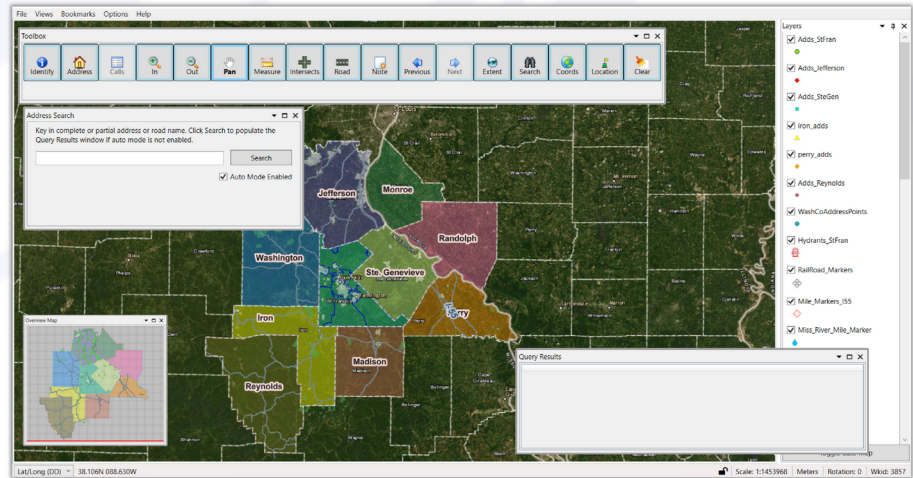
Call Logs													
SDR AllService Cushing AVL													
House Number	Number Suffix	Street Predirection	Street Name	Street Suffix	Service Class	Customer	Area Code	Phone Prefix	Phone Suffix	Month	Day	Year	Minute
208		N	MIDDLE ST - NE SECTOR		WRLS	VERIZON	573	516	0397	4	15	21	10 59
208		N	MIDDLE ST - W Sector		WPH2	AT&T MOBILITY	573	517	2205	4	15	21	10 44
208		N	MIDDLE ST - W Sector		WPH2	AT&T MOBILITY	573	517	2205	4	15	21	10 44
208		N	MIDDLE ST - SW Sector		WPH2	AT&T MOBILITY	573	517	2205	4	15	21	10 43
208		N	MIDDLE ST - SW Sector		WPH2	AT&T MOBILITY	573	517	2205	4	15	21	10 43
13213			JOGGERST RD		RESD	KNIGHT, RAYMOND	573	883	3174	4	15	21	10 37
13213			JOGGERST RD		RESD	KNIGHT, RAYMOND	573	883	3174	4	15	21	10 37
9648	B		TOWER		WPH2	SPRINT	573	713	8247	4	15	21	10 36
9648	B		TOWER		WPH2	SPRINT	573	713	8247	4	15	21	10 36

Map Navigation

Map navigation is easy and versatile with Go2It. Traditional zoom in, zoom out, and pan controls are offered, as well as zooming by mouse wheel, fully customizable bookmark locations and overview map controls. Clicking on the overview map will move the call map to the location chosen on the overview map; the overview map can also be displayed in a resizable window docked to the program or undocked on a separate monitor.

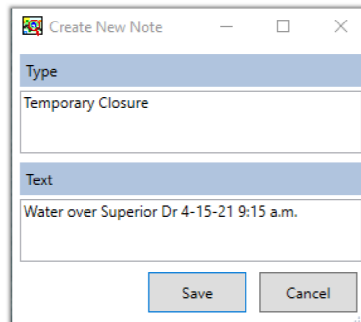
Map Flexibility

Go2It's modern layout features windows and tool panels that can be resized and arranged in docked or free-floating formats. Window/ Tool layouts are associated with each Microsoft Windows User log-in, allowing dispatchers with different needs and preferences to open their own default configuration from any workstation position when they log in for their shift. Map content, labels, and symbology – colors, symbols, line weights – are controlled centrally by the map administrator.



Media Links

Go2It 3.0 administrative users can link images such as photographs of buildings or interiors, floor plans, evacuation plans or other media to map notes. The link to the file is available when the user hovers the mouse over the GIS point or polygon and can be opened, viewed, resized, and printed as needed. Website URLs can also be stored as links for ready access to park and campground layouts, site information, business websites, or other critical information available online.



Map Tips and Call Outs

Map tips are pop-ups activated by hovering over features on the map such as landmark points, boundaries, or structure points. These tips can be set by the map administrator to display any data stored in the GIS attribution – names of responding agencies, details about structures such as owner's name or gate combination, or PSAP name and phone number for out-of-jurisdiction calls. Any information stored in the GIS can be displayed or linked through this mouse pointer-based interface.



Data Requirements and Map Updates

Go2It is powered by OGC (Open Geospatial Consortium) GeoPackages. A GeoPackage is an open, standards-based, platform-independent, portable compact format for transferring geospatial information. GeoPackages offer speed and database functionality, serve as effective engines for dispatch mapping operations and organize all data – map, indexes, settings – into one file package which can be easily shared and distributed. No additional software is required to build the GeoPackages utilized by Go2It or to input updated data. ArcGIS data or any geospatial data which can be exported to shapefile can be displayed by Go2It, including imagery. Base map link to ESRI image service is included in Go2It. Read more about geopackages here: http://www2.unb.ca/~estef/papers/go_geomatics_stefanakis_may_2017.pdf

System Requirements

Go2It 3.0 is a Windows desktop solution supported on Windows 10 and 11 operating systems. Nearly all system/hardware configurations are adequate for Go2It 3.0 though, SDR recommends 16GB of RAM, with speed and performance gains possible with additional RAM over 16GB. Internet connectivity is required for use of base map imagery.

SDR - We Build Solutions

SDR PO Box 684 Olathe KS 66051 800-238-1911 www.sdrmaps.com